

# LODGE at Coto

LIVING IN HIGH DEFINITION

## THE STUDIO

Studio : 1 Bath : Patio  
448 Sq. Ft.

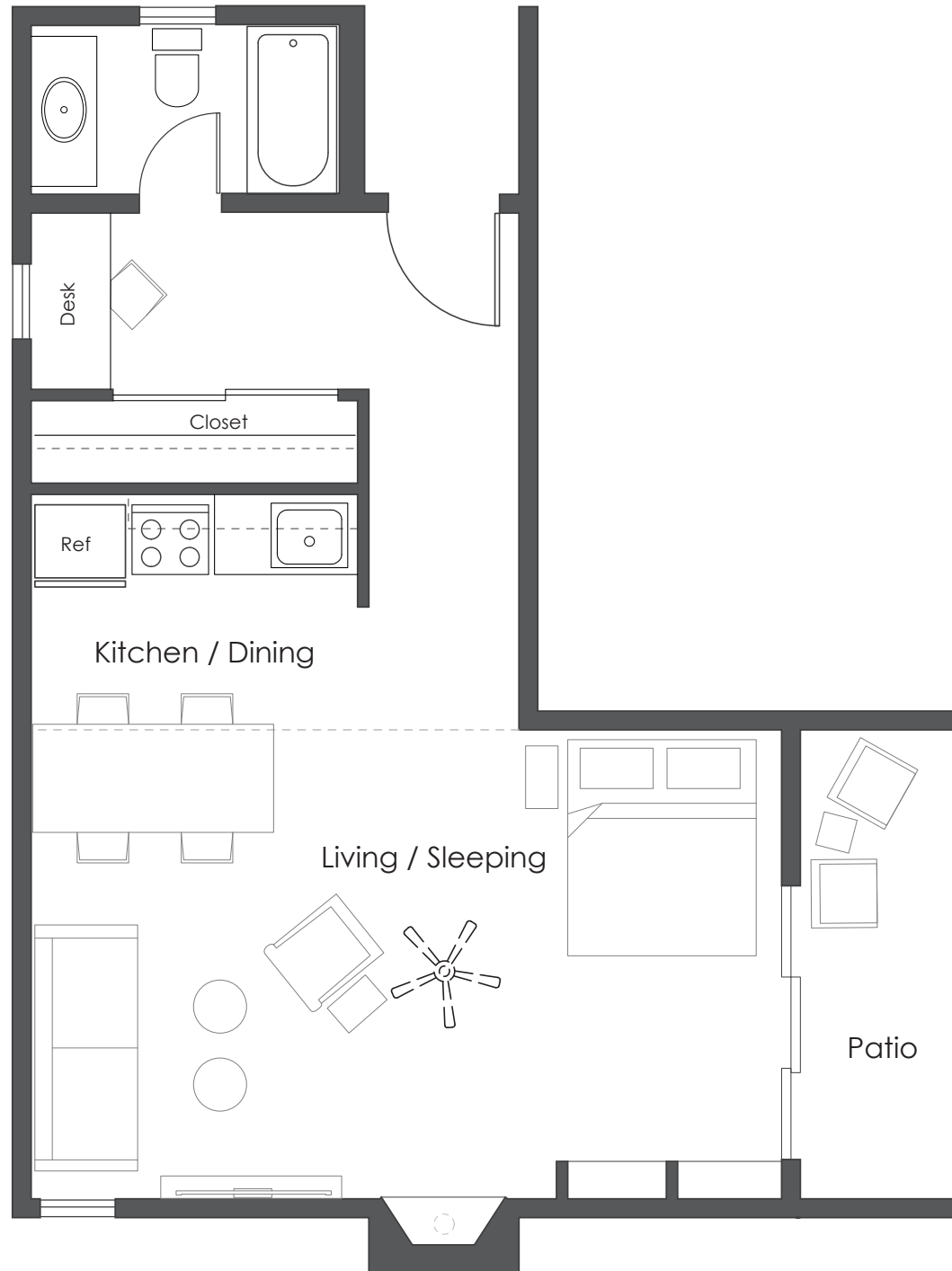
### HIGHLIGHTS

- Open Concept
- Arts and Crafts Style Cabinets
- Deluxe Patios with Gated Back Yards on Select Units
- Natural Stone Slate Flooring
- Vaulted Ceiling in Living
- Natural Burning Fire Place
- Built-In Desk
- White or Stainless Appliances
- Dog Friendly



Equal Housing Opportunity

Square footages are approximate and subject to change. In our continuing effort to meet customer expectations, we reserve the right to make changes or modifications without notice or obligation. Please see Leasing Representative for details.



# LODGE at Coto

LIVING IN HIGH DEFINITION

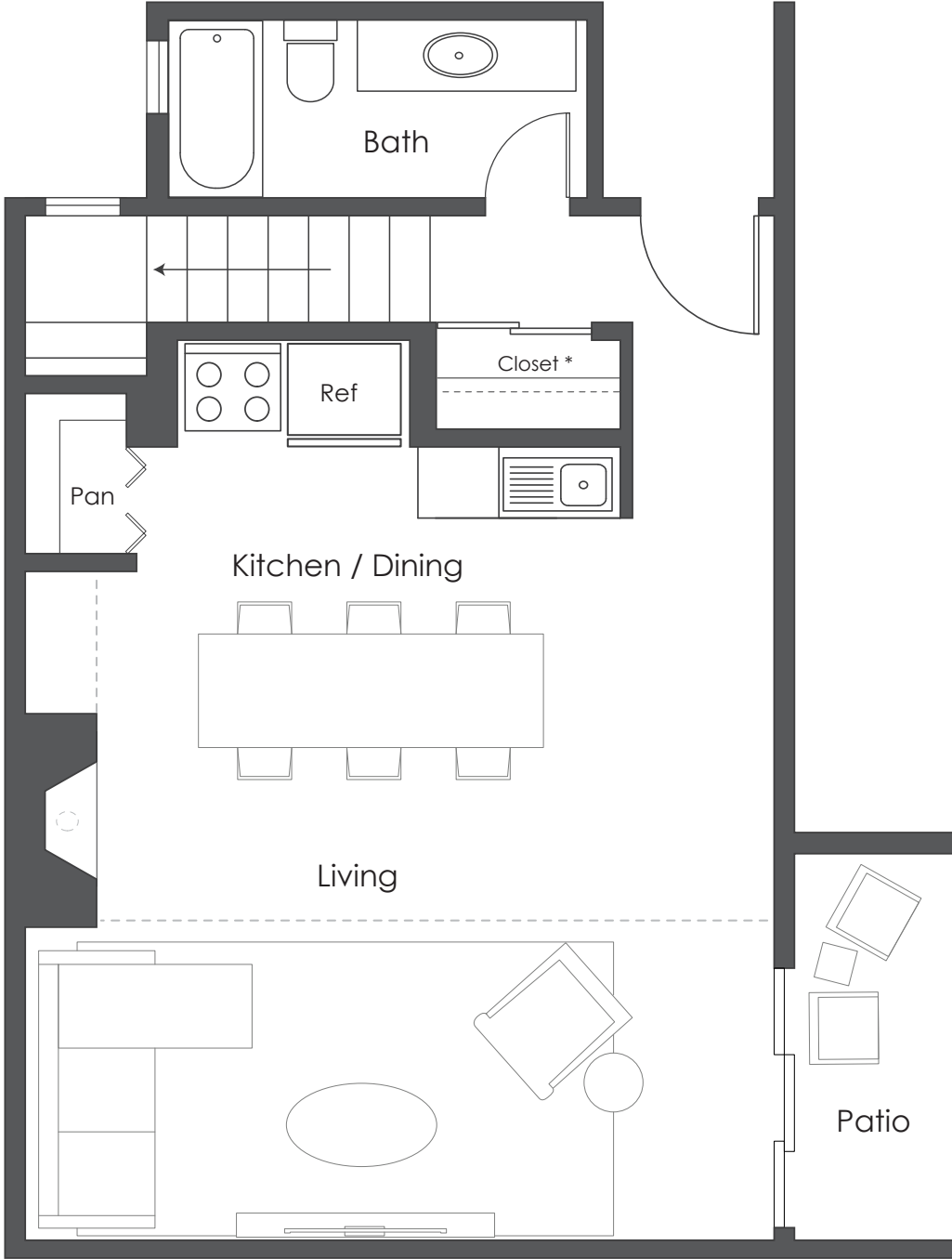
## THE LOFT


1 Bed : 1 Bath : Patio  
1098 Sq. Ft.

### Level I

HIGHLIGHTS

- Bedroom Overlooking Living Room
- Vaulted Wood Ceilings
- Walk-In Closet
- Sitting Alcove
- Carpet
- Natural Light from 4 sides
- Ceiling Fan in Bedroom



 Equal Housing Opportunity

Square footages are approximate and subject to change. In our continuing effort to meet customer expectations, we reserve the right to make changes or modifications without notice or obligation. Please see Leasing Representative for details.

\* In Select Units

# LODGE at Coto

LIVING IN HIGH DEFINITION

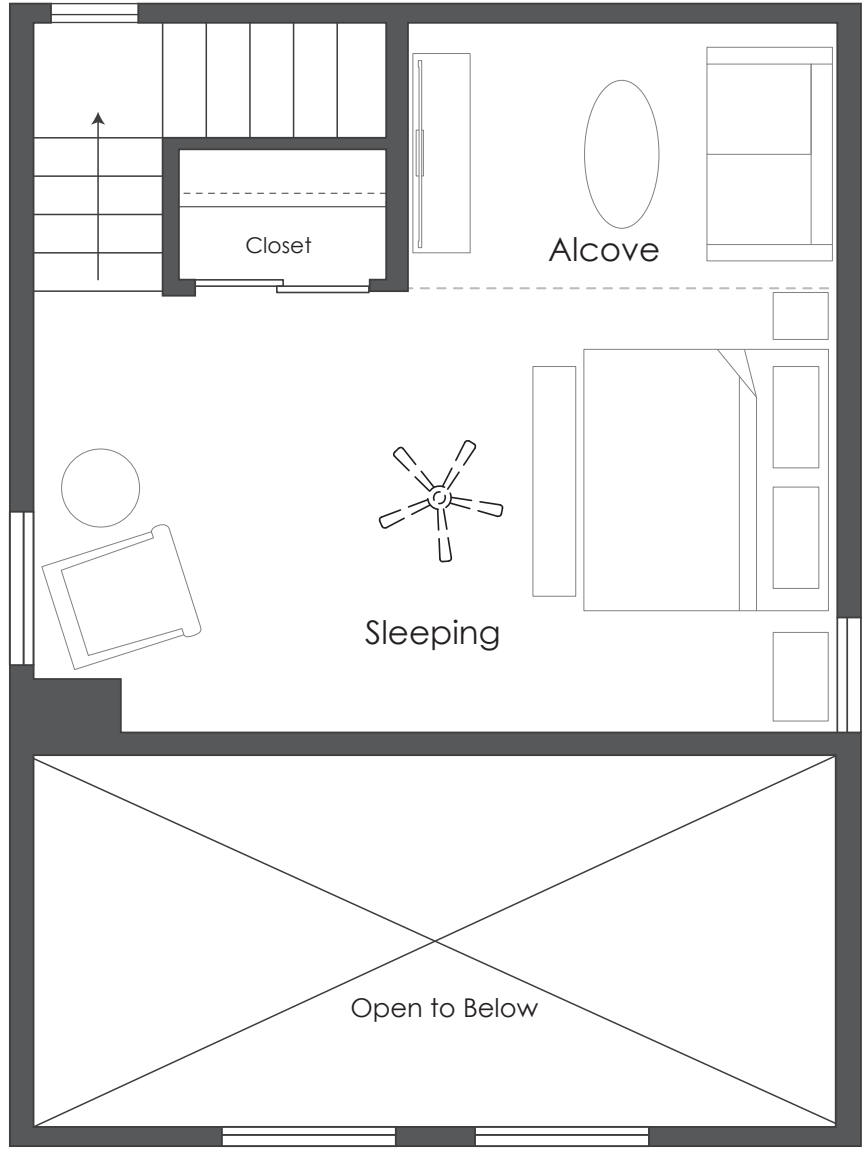
## THE LOFT

1 Bed : 1 Bath : Patio  
1098 Sq. Ft.

### Level II

HIGHLIGHTS

- Two Story Open Concept
- Arts and Crafts Style Cabinets
- Deluxe Patios with Gated Back Yards
- Natural Stone Slate Flooring
- Vaulted Ceiling in Living Room
- Walk-In Pantry
- Natural Burning Fire Place
- White or Stainless Appliances
- Dog Friendly



 Equal Housing Opportunity

Small text disclaimer: Square footages are approximate and subject to change. In our continuing effort to meet customer expectations, we reserve the right to make changes or modifications without notice or obligation. Please see Leasing Representative for details.

# LODGE at Coto

LIVING IN HIGH DEFINITION

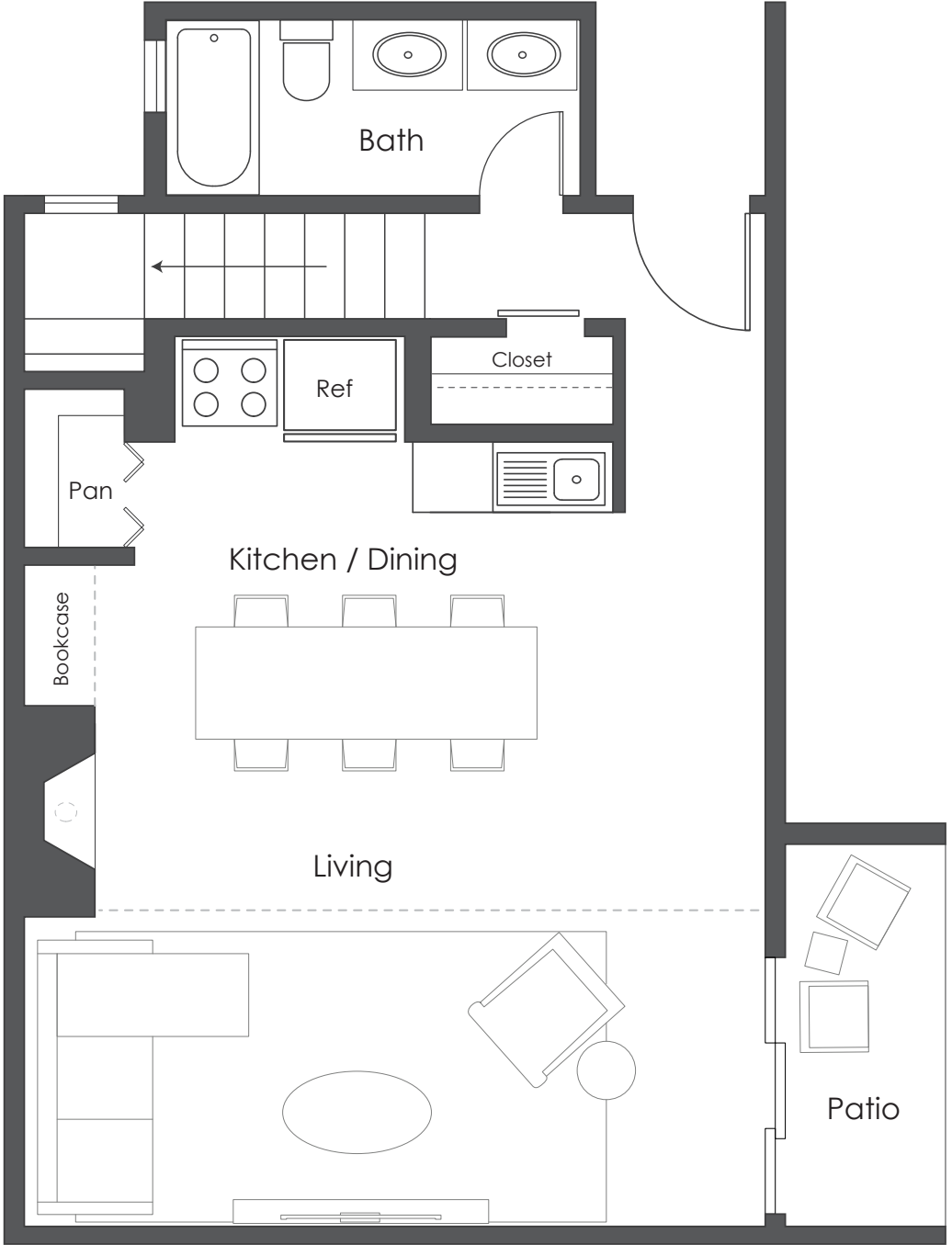
## THE TOWNHOME

1 Bed : Study : 1 Bath : Patio  
1098 Sq. Ft.

### Level I

HIGHLIGHTS

- Study/Office Overlooking Living Room
- Vaulted Wood Ceilings
- Walk-In Closet
- Sitting Alcove
- Wood Flooring
- Ceiling Fan in Bedroom



Square footages are approximate and subject to change. In our continuing effort to meet customer expectations, we reserve the right to make changes or modifications without notice or obligation. Please see Leasing Representative for details.

# LODGE at Coto

LIVING IN HIGH DEFINITION

## THE TOWNHOME

1 Bed : Study : 1 Bath : Patio  
1098 Sq. Ft.

### Level II

#### HIGHLIGHTS

- Two Story Open Concept
- Arts and Crafts Style Cabinets
- Deluxe Patios with Gated Back Yards
- Natural Stone Slate Flooring
- Vaulted Ceiling in Living Room
- Built-In Bookcase
- Natural Burning Fire Place
- White Appliances
- Dual Vanities
- River Rock Bottom Shower
- Dog Friendly



Equal Housing Opportunity

Square footages are approximate and subject to change. In our continuing effort to meet customer expectations, we reserve the right to make changes or modifications without notice or obligation. Please see Leasing Representative for details.

